



european  
**burden-eu**  
of disease  
network



Tijana Lainović<sup>1</sup>, Evgenije Novta<sup>1</sup>, Balázs Ádám<sup>2</sup>, Tatjana Maravić<sup>1,3</sup>, Stevan Dragosavljević<sup>4</sup>, Larisa Blažić<sup>1,4</sup>



# Disease burden of edentulism – Dental Clinic of Vojvodina, Serbia, 2008-2019



<sup>1</sup> Faculty of Medicine, School of Dental Medicine, University of Novi Sad, Novi Sad, Serbia

<sup>2</sup> Division of Occupational Health, Department of Preventive Medicine, Faculty of Public Health, Medical and Health Science Center, University of Debrecen, Hungary

<sup>3</sup> Department of Biomedical and Neuromotor Sciences, DIBINEM, University of Bologna — Alma Mater Studiorum, Bologna, Italy

<sup>4</sup> Dental Clinic of Vojvodina, Novi Sad, Serbia





europaean  
**burden-eu**  
of disease  
network



Copyright by Nébel Biocare AG

Copyright by Nébel Biocare AG

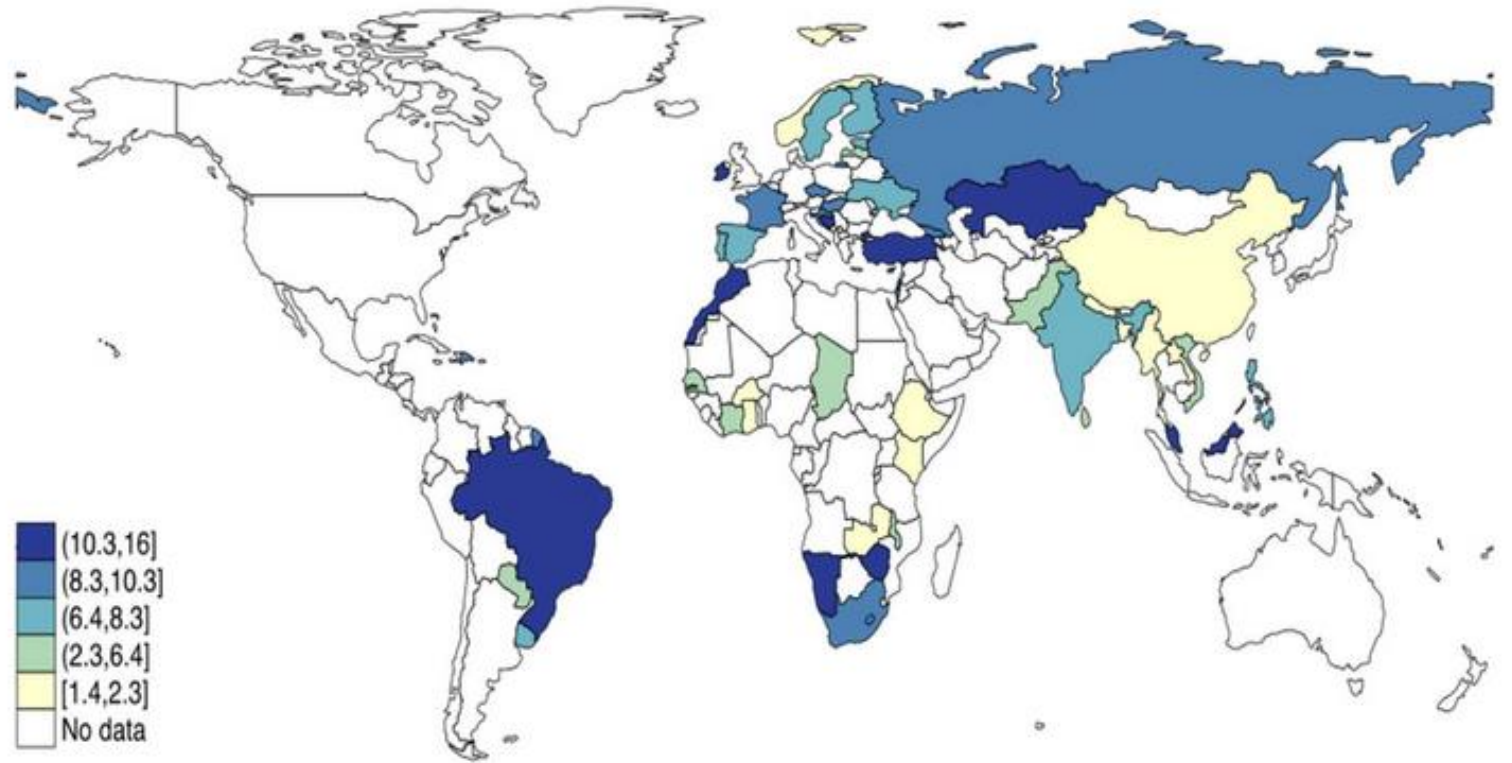


european  
**burden-eu**  
of disease  
network



Copyright by Nobel Biocare AG

Copyright by Nobel Biocare AG



Age-sex adjusted prevalence of edentulism. All age-sex adjusted weighed estimates were calculated using the United Nations population pyramids for the year 2010. Data from 50 countries are presented. The figure was created with STATA 13.1 (StataCorp. 2013. Stata Statistical Software: Release 13. College Station, TX: StataCorp LP).

Stefanos Tyrovolas<sup>1,2</sup>, Ai Koyanagi<sup>1,2</sup>, Demosthenes B. Panagiotakos<sup>3</sup>, Josep Maria Haro<sup>1,2</sup>, Nicholas J. Kassebaum<sup>4</sup>, Vanessa Chrepa<sup>5</sup> & Georgios A. Kotsakis. Population prevalence of edentulism and its association with depression and self-rated health. *Scientific Reports*. 6:37083 | DOI: 10.1038/srep37083



european  
**burden-eu**  
of disease  
network

## METHODS.

Prevalence (P) - **from 2008 to 2019** at the Clinical Prosthetic Department  
diagnosed cases rehabilitated by complete dentures was an indicator of edentate people.





european  
**burden-eu**  
of disease  
network

## METHODS.

Prevalence (P) - **from 2008 to 2019** at the Clinical Prosthetic Department  
diagnosed cases rehabilitated by complete dentures was an indicator of edentate people.

total sample of **70.956 patients**

including **1 620** patients restored with complete dentures

(**42.7%** male, **57.3%** female, mean age **64**).





european  
**burden-eu**  
of disease  
network

## METHODS.

Prevalence (P) - **from 2008 to 2019** at the Clinical Prosthetic Department  
diagnosed cases rehabilitated by complete dentures was an indicator of edentate people.

total sample of **70.956 patients**

including **1 620** patients restored with complete dentures

(**42.7%** male, **57.3%** female, mean age **64**).

**Disability weight (DW)** for severe tooth loss was taken from the “**Disability weight for the Global Burden of Disease 2013 study**”<sup>1</sup> .

**DW=0.064**



[1] Joshua A Salomon, Juanita A Haagsma, Adrian Davis, Charline Maertens de Noordhout, Suzanne Polinder, Arie H Havelaar, Alessandro Cassini, Brecht Devleeschauwer, Mirjam Kretzschmar, Niko Speybroeck, Christopher J L Murray, Theo Vos. Disability weights for the Global Burden of Disease 2013 study. Lancet vol. 3, November 2015, e712-e723.



european  
**burden-eu**  
of disease  
network

## METHODS.

Prevalence (P) - **from 2008 to 2019** at the Clinical Prosthetic Department  
diagnosed cases rehabilitated by complete dentures was an indicator of edentate people.

total sample of **70.956 patients**

including **1 620** patients restored with complete dentures

(**42.7%** male, **57.3%** female, mean age **64**).

**Disability weight (DW)** for severe tooth loss was taken from the “**Disability weight for the Global Burden of Disease 2013 study**”<sup>1</sup> .

**DW=0.064**

**DALYs = YLD + YLL (YLD = P x DW)**

**YLDs only** (YLL=0)



[1] Joshua A Salomon, Juanita A Haagsma, Adrian Davis, Charline Maertens de Noordhout, Suzanne Polinder, Arie H Havelaar, Alessandro Cassini, Brecht Devleeschauwer, Mirjam Kretzschmar, Niko Speybroeck, Christopher J L Murray, Theo Vos. Disability weights for the Global Burden of Disease 2013 study. Lancet vol. 3, November 2015, e712-e723.



european  
**burden-eu**  
of disease  
network

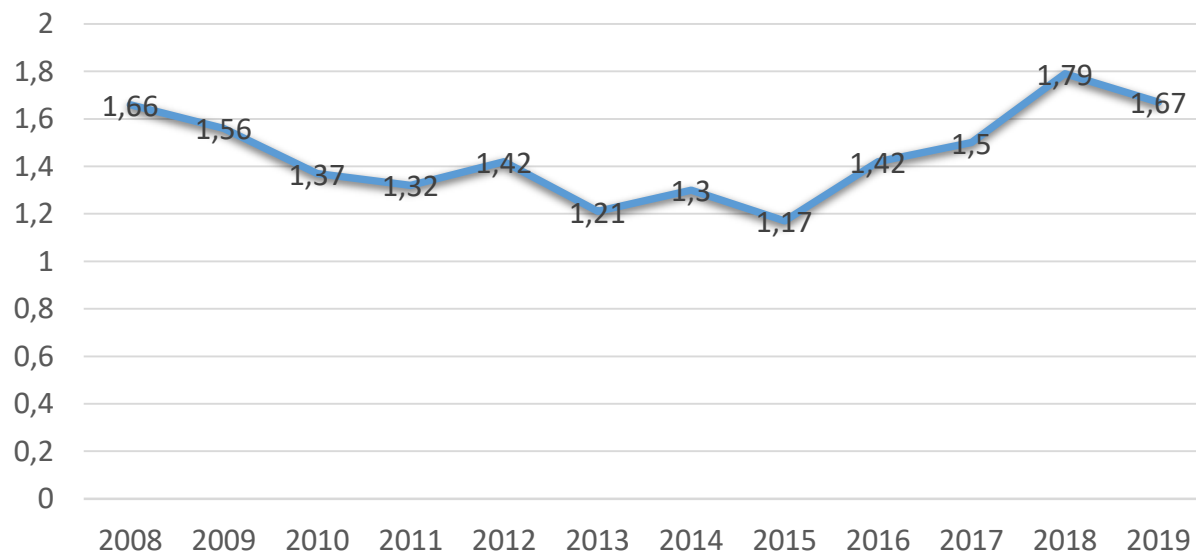
## RESULTS.

For the observed period, **the total disease burden (per 1000) was 1.42 DALYs (0.64 for men and 0.78 for women).**





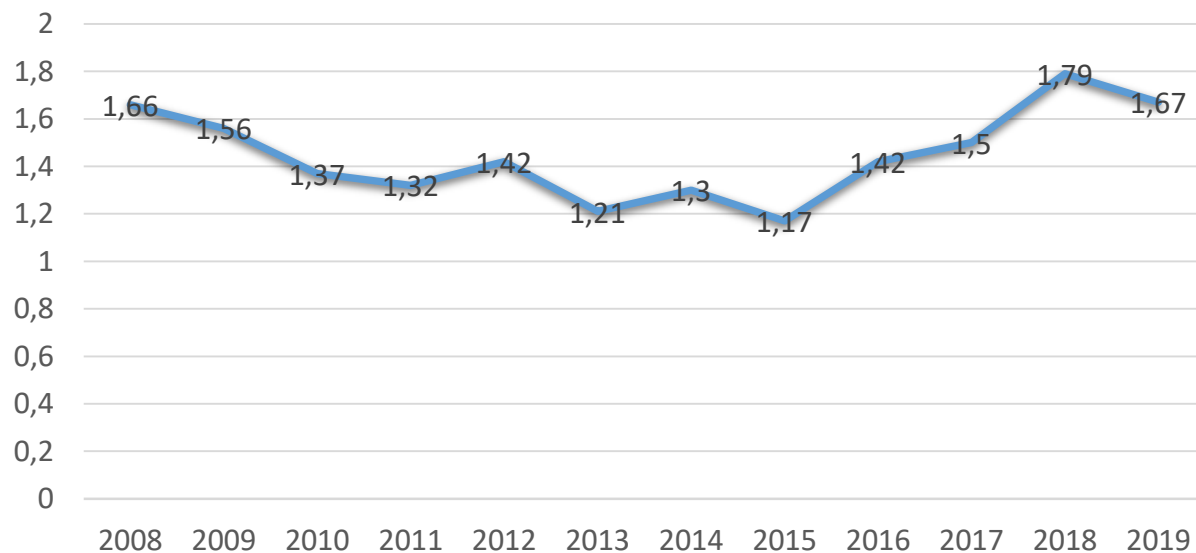
### DALYs from 2008-2019.



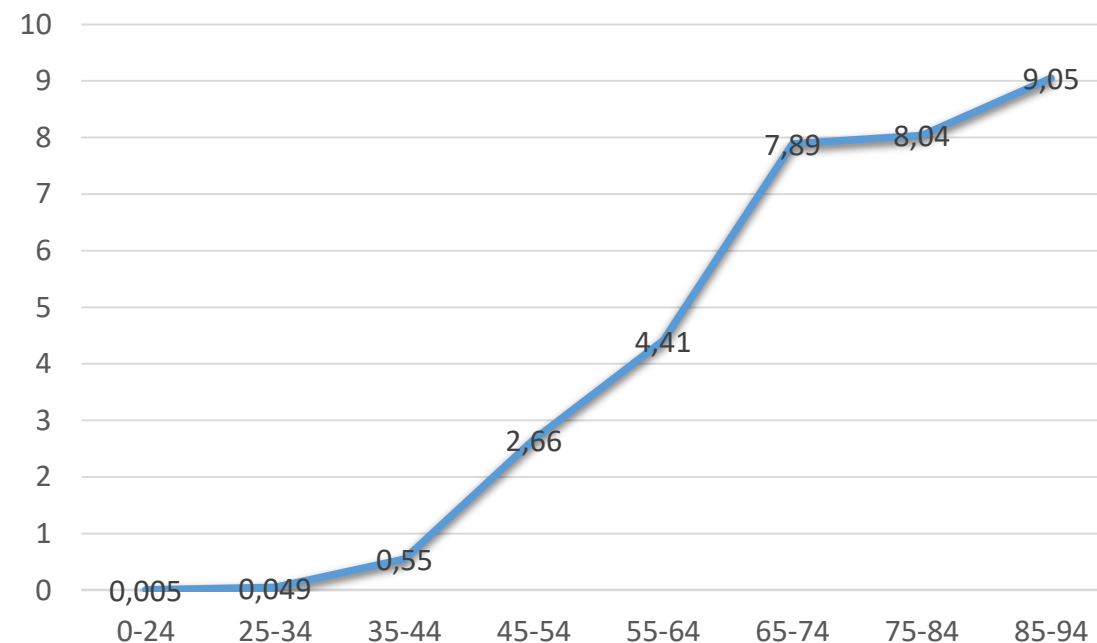


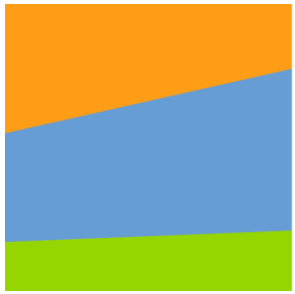
## RESULTS.

### DALYs from 2008-2019.



### age-stratified DALYs (per 1000)





european  
**burden-eu**  
of disease  
network



## CONCLUSION.

- Considering the calculated disease burden, edentulism has been posing **an increasing challenge for the health system in Serbia** over the past decade.
- The quantified burden could contribute to the improvement of **evidence-informed policymaking in public oral health in Serbia**

## ACKNOWLEDGMENT.

- Supported by „Burden-EU“ COST Action
- EUPHA and EPH Conference Foundation - registration fee waiver

