

- ↳ salle de réunion
- ↳ vergaderzaal
- direction →
- directie →
- ↳ sanitaires/vestiaires
- ↳ toilet/vestiaires



 sciensano

Latest news



15.03.2023 More Belgians will likely suffer from overweight in the future

Information on the projection of overweight and obesity is available on the website.



06.03.2023 People affected by overweight and obesity have higher healthcare costs

Information on the cost related to overweight and obesity is available.



28.02.2023 The number of registered new cancer cases has dropped from 71,651 in 2019 to 68,782 in 2020

The information on cancer has been updated with 2020 data.



[COVID-19 Crisis](#)



[Burden of Disease](#)



[Life Expectancy and Quality of Life](#)



[Mortality and Causes of Death](#)



[Non-Communicable Diseases](#)



[Mental Health](#)





HOW HEALTHY ARE BELGIANS?




DE

LA

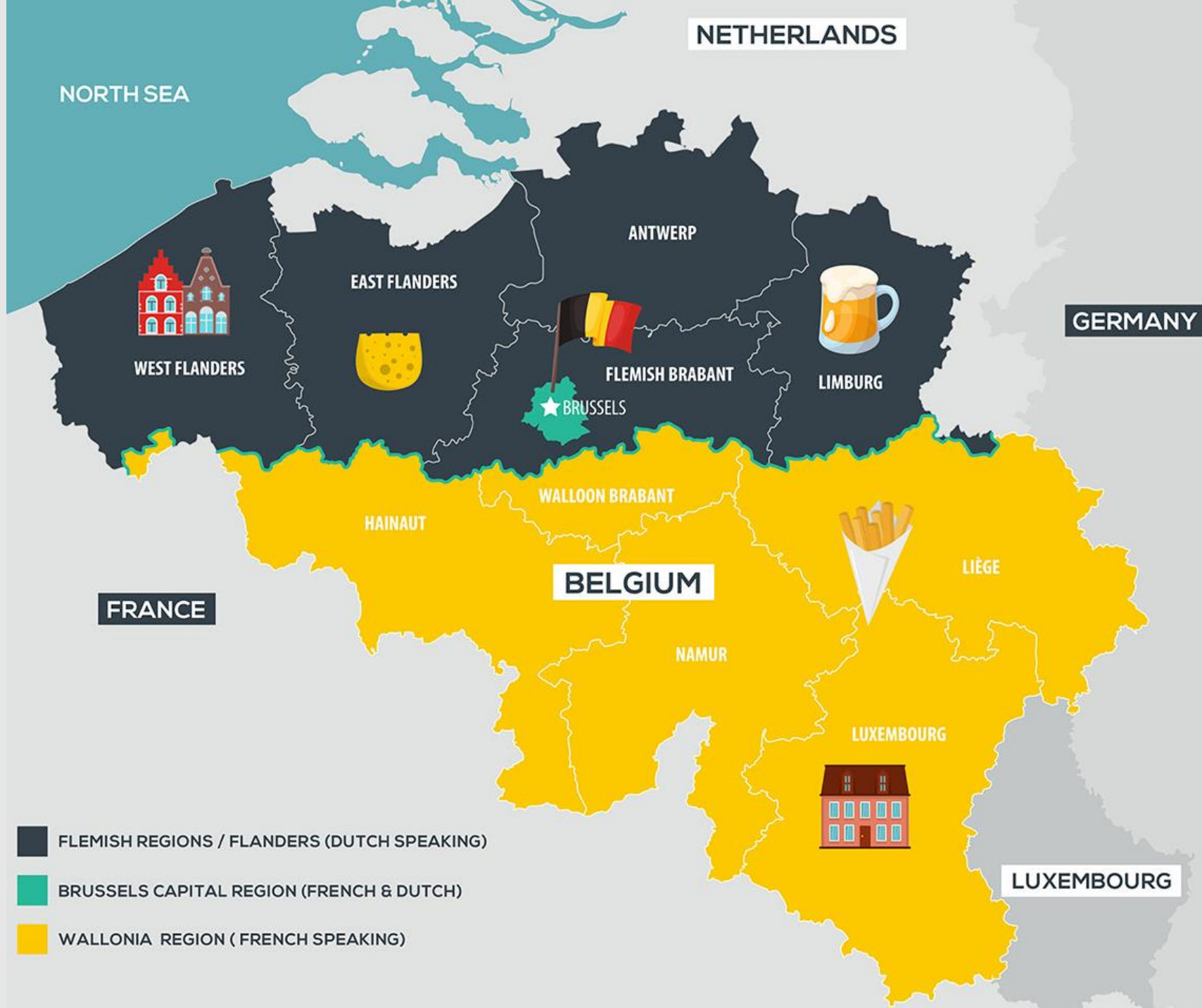
SM

HOW HEALTHY ARE BELGIANS?



HOW HEALTHY ARE BELGIANS?





Deel op [f](#) [t](#) [in](#)

02/05/2022

ZORGBELEID

ALGEMENE ZIEKENHUIZEN

REVALIDATIEZIEKENHUIZEN

WOONZORG

GEESTELIJKE GEZONDHEIDSZORG

MEER ZORGWIJZER
ARTIKELS

EERSTE LIJN

Nationale ziektelaststudie brengt gezonde levensjaren in kaart

“Depressie leidt in ons land tot het grootste verlies aan gezonde levensjaren”

De maatschappelijke impact van alle belangrijkste ziektes in ons land vergelijken, uitgedrukt in een verlies aan gezonde levensjaren. Dat is het doel van de Nationale Ziektelaststudie van Sciensano. “Vroeger werd vooral gekeken naar sterftecijfers, maar ziektes hebben ook een grote impact op de levenskwaliteit”, legt onderzoeker Brecht Devleeschauwer uit.

Wat is de Nationale Ziektelaststudie precies?

Belgian National Burden of Disease Study

What are the most important diseases in Belgium? Which risk factors contribute most to the overall disease burden? How is the burden of disease evolving over time, and how do budgetary constraints, a precise answer to these basic questions is more than ever necessary to inform policy-making.

To address this need, **Sciensano** is conducting a **national burden of disease study**. In addition to generating internally consistent estimates of death rate (mortality) or how disease will also be quantified using Disability-Adjusted Life Years (DALYs). The use of DALY allows to estimate the years of life lost from premature death and years of life lived with disability of the burden of various diseases, injuries and risk factors.

For more info, please visit <https://www.sciensano.be/en/projects/belgian-national-burden-disease-study>

BeBOD estimates of the burden of disease

Disability-Adjusted Life Years (DALYs)

Disability-Adjusted Life Year (DALYs) are a measure of overall disease burden, representing the healthy life years lost due to morbidity and mortality. DALYs are calculated as the sum of Years Lived with Disability (YLDs) and Years of Life Lost (YLLs).

Years Lived with Disability (YLDs)

Years Lived with Disability (YLDs) quantify the morbidity impact of diseases. They are calculated as the product of the number of prevalent cases and the average duration of the disease. YLDs reflect the relative reduction in quality of life, on a scale from 0 (perfect health) to 1 (death). We calculate YLDs based on the WHO Global Burden of Disease reference life table, which represents the theoretical maximum number of years that people can expect to live in full health.

Years of Life Lost (YLLs)

Years of Life Lost (YLLs) quantify the mortality impact of diseases. They are calculated as the product of the number of deaths and the average duration of the disease. YLLs are calculated based on the WHO Global Burden of Disease reference life table, which represents the theoretical maximum number of years that people can expect to live in full health.

Number of prevalent cases

The number of prevalent cases for each disease was calculated based on a variety of Belgian data sources, including the Intego general practice sentinel network, and the European kidney registry (ERA-EDTA).

Causes of death

The number of deaths by cause of death are based on the official causes of death database compiled by the Institute for Agricultural and Fisheries Research (MIRA). Next, we perform a probabilistic redistribution of ill-defined deaths to specific categories based on the WHO Global Burden of Disease reference life table.

Chart settings

Measure
Disability-Adjusted Life Years (DALYs)

Year
2013 2019

Age
All ages

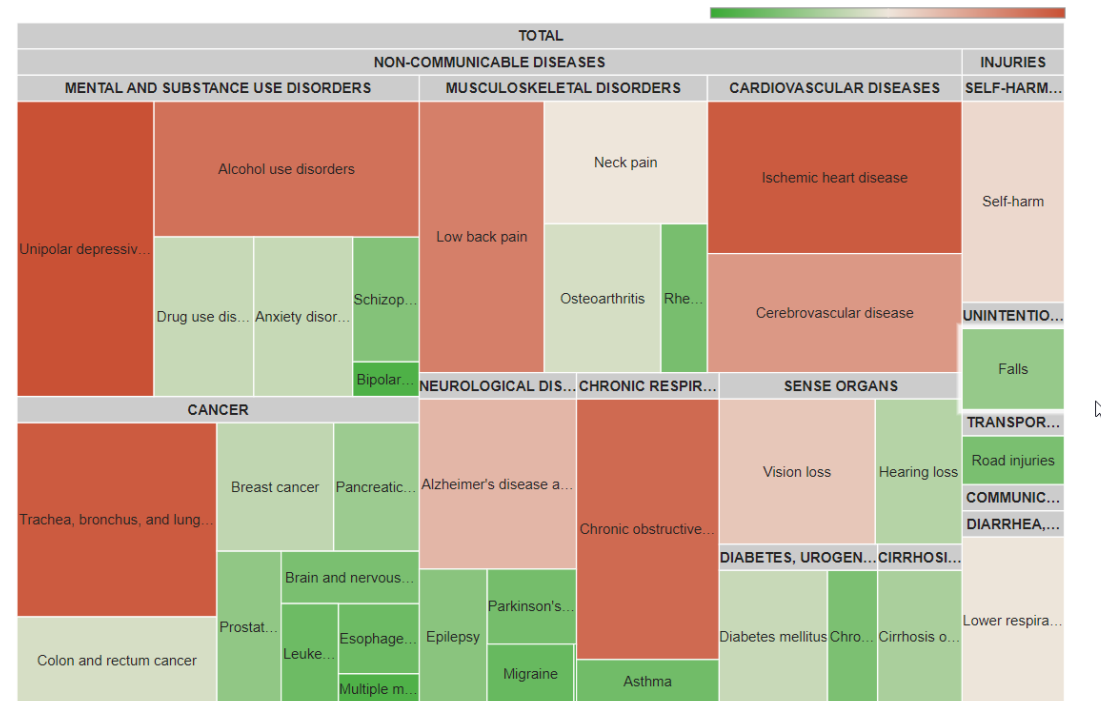
Sex
Both sexes Men Women

Region
Belgium Brussels Flanders Wallonia

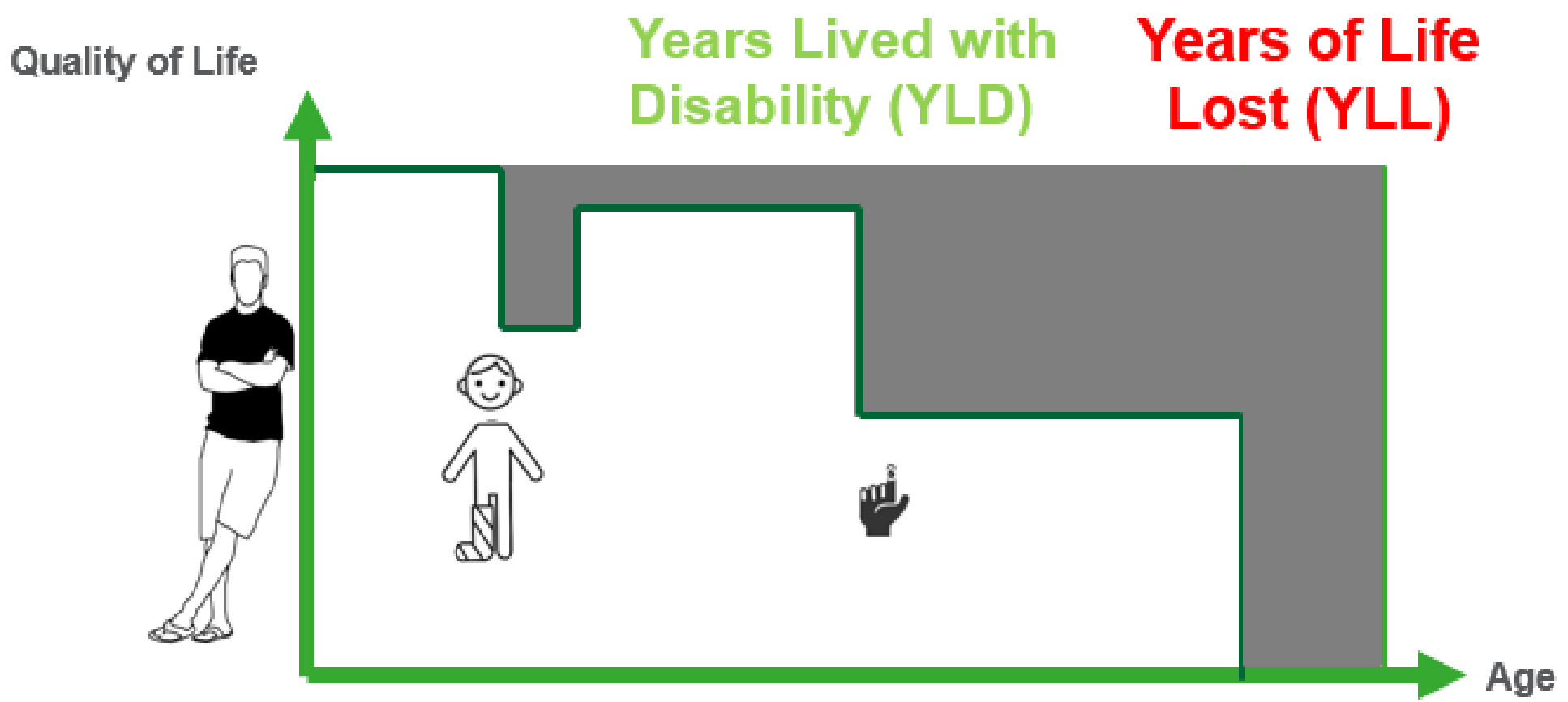
Display mode
Level 1 Level 2 Level 3

[Download all data \(36.4 MB\)](#)

Left-click on any disease group to drill down. Right-click to return to the higher level.

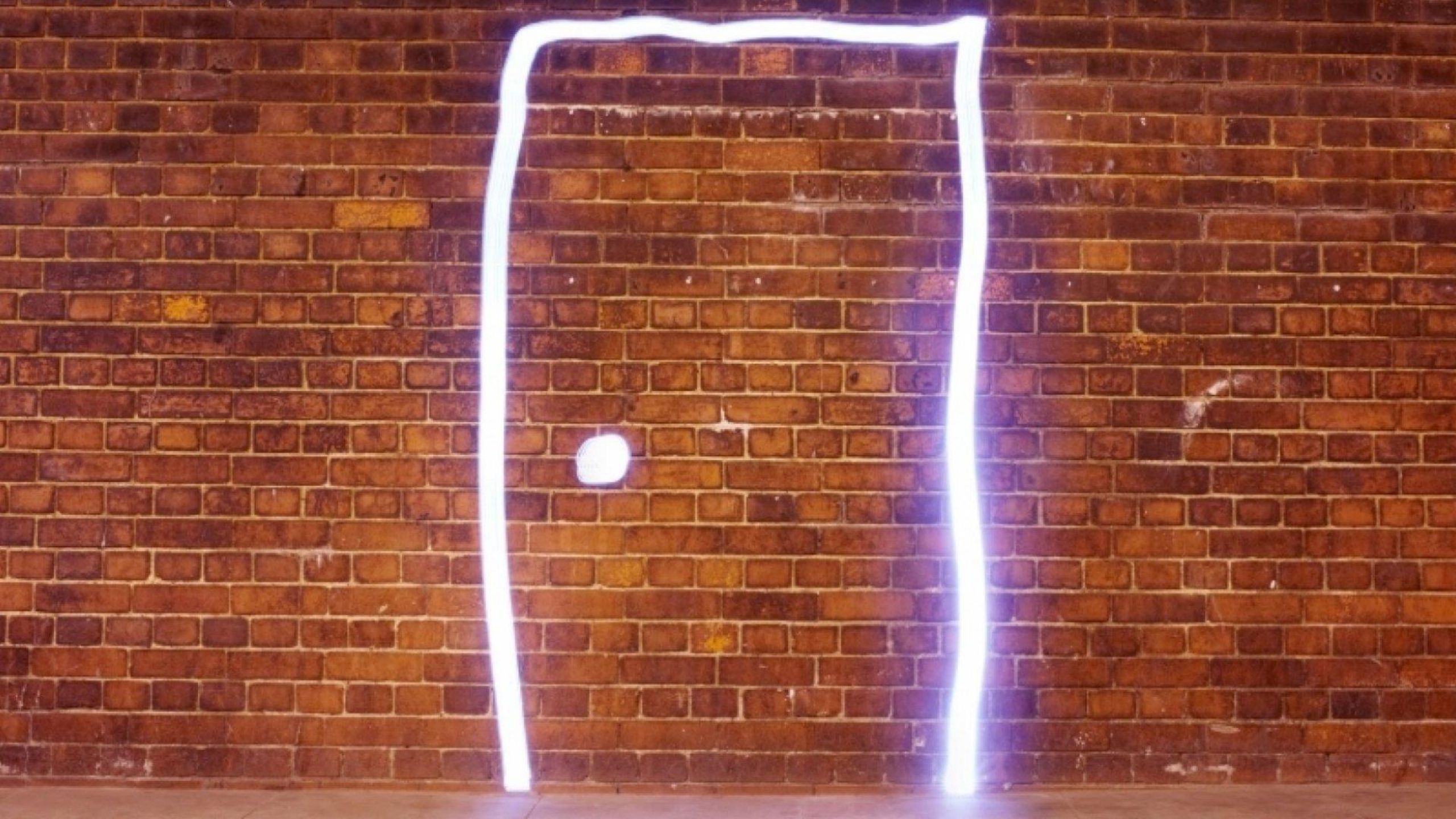


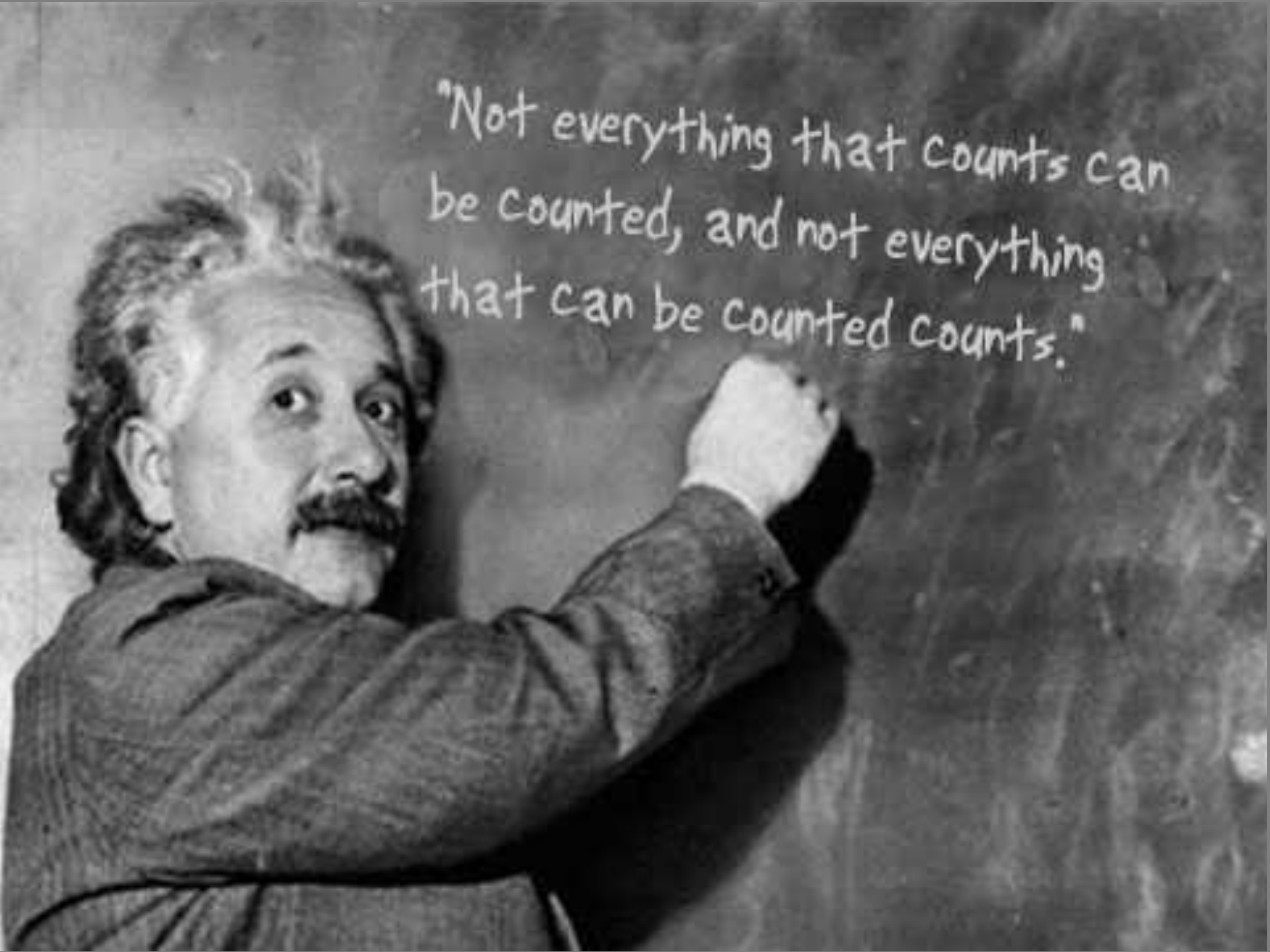




$$DALY = YLL + YLD$$





A black and white photograph of Albert Einstein standing in front of a chalkboard. He is wearing a dark, textured sweater and has his characteristic wild, white hair and mustache. He is looking back over his right shoulder towards the camera while his right hand is raised, holding a piece of chalk and writing on the board. The chalkboard is filled with his handwritten quote in white chalk.

"Not everything that counts can
be counted, and not everything
that can be counted counts."

