



National Institute for Public Health
and the Environment
Ministry of Health, Welfare and Sport

An
infographic
is worth a
thousand
words

Infographics and the knowledge translation framework

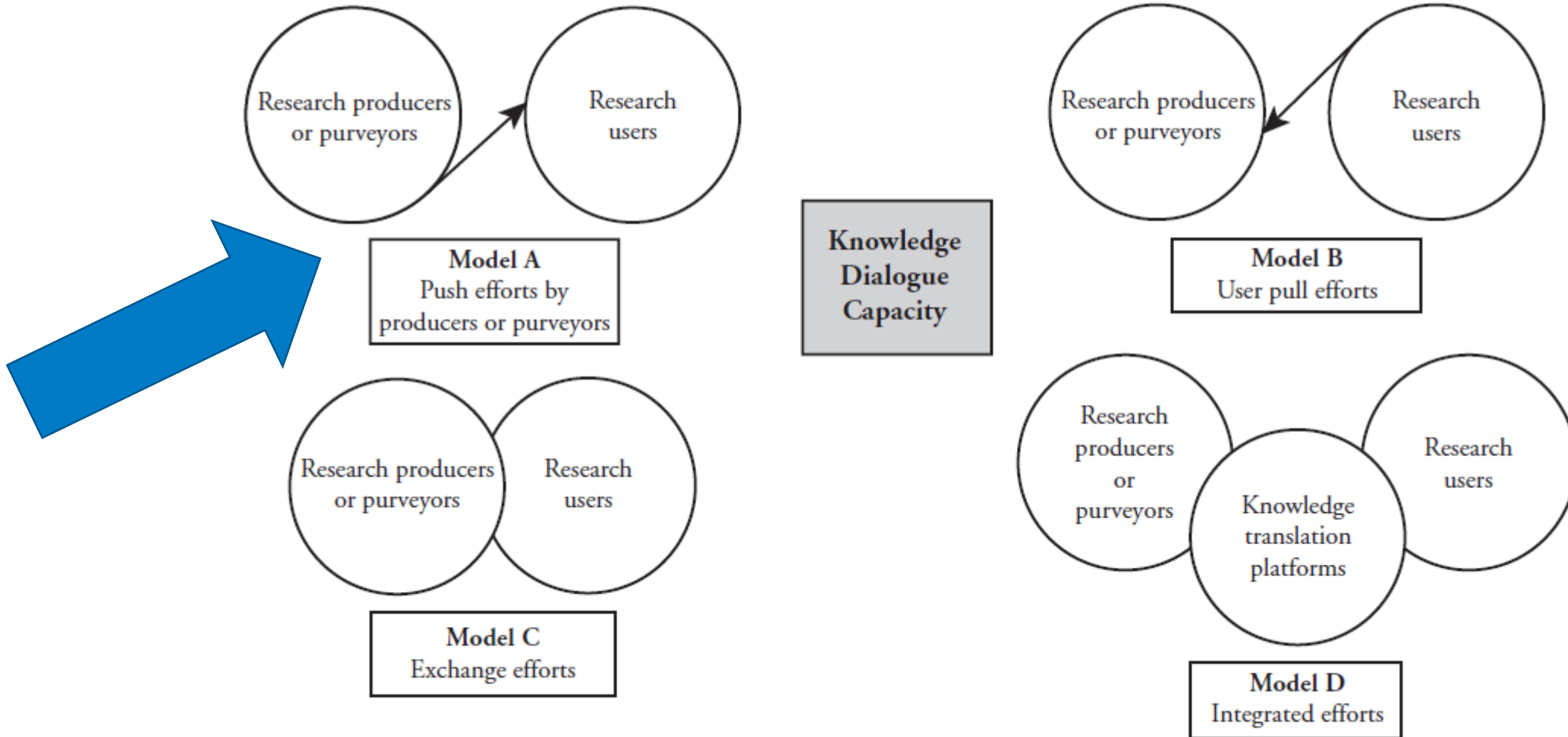
Henk Hilderink

Cindy Deuning

Eveline van der Wilk



Models of Knowledge Translation



Source: Adapted from Lavis, J., J. Lomas, M. Hamid and N. Sewankambo. 2006. "Assessing Country-level Efforts to Link Research to Action." *Bulletin of the World Health Organisation*, 84: 620–628.



Burden of Disease

> Interpretation of Disability-Adjusted Life Years (DALY) is difficult

— Not only for policy makers

> Complex calculation of a DALY

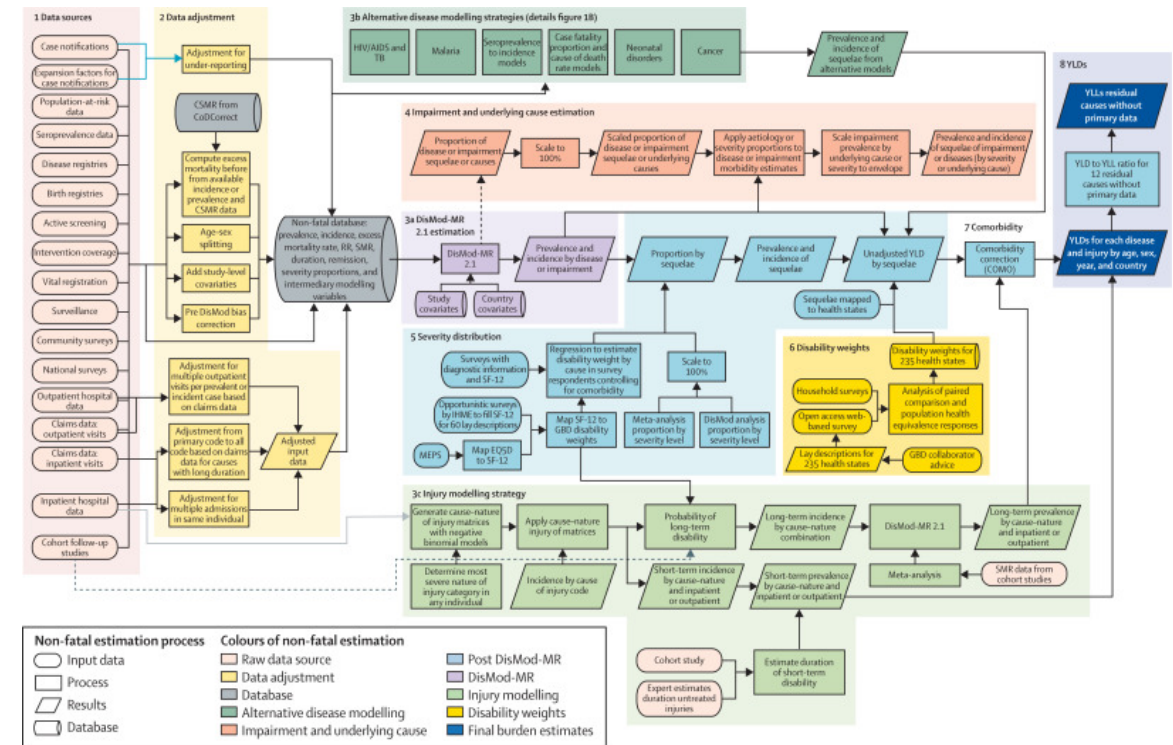
— Many choices to be made

> A lot of data

— Needed for the calculations

— And as a result

(sex, age, disease, risk factor, year, countries)

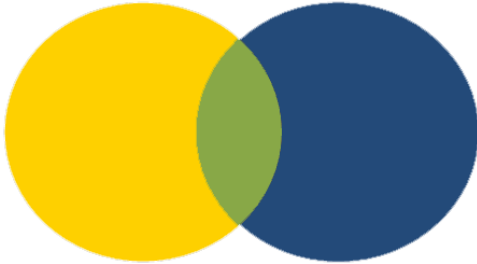


(GBD 2015)

Burden of Disease and push model of knowledge translation



> **When:** policy cycle



> **Who:** interaction with policy makers



> **What:** Data – Information – Knowledge - Wisdom pyramid

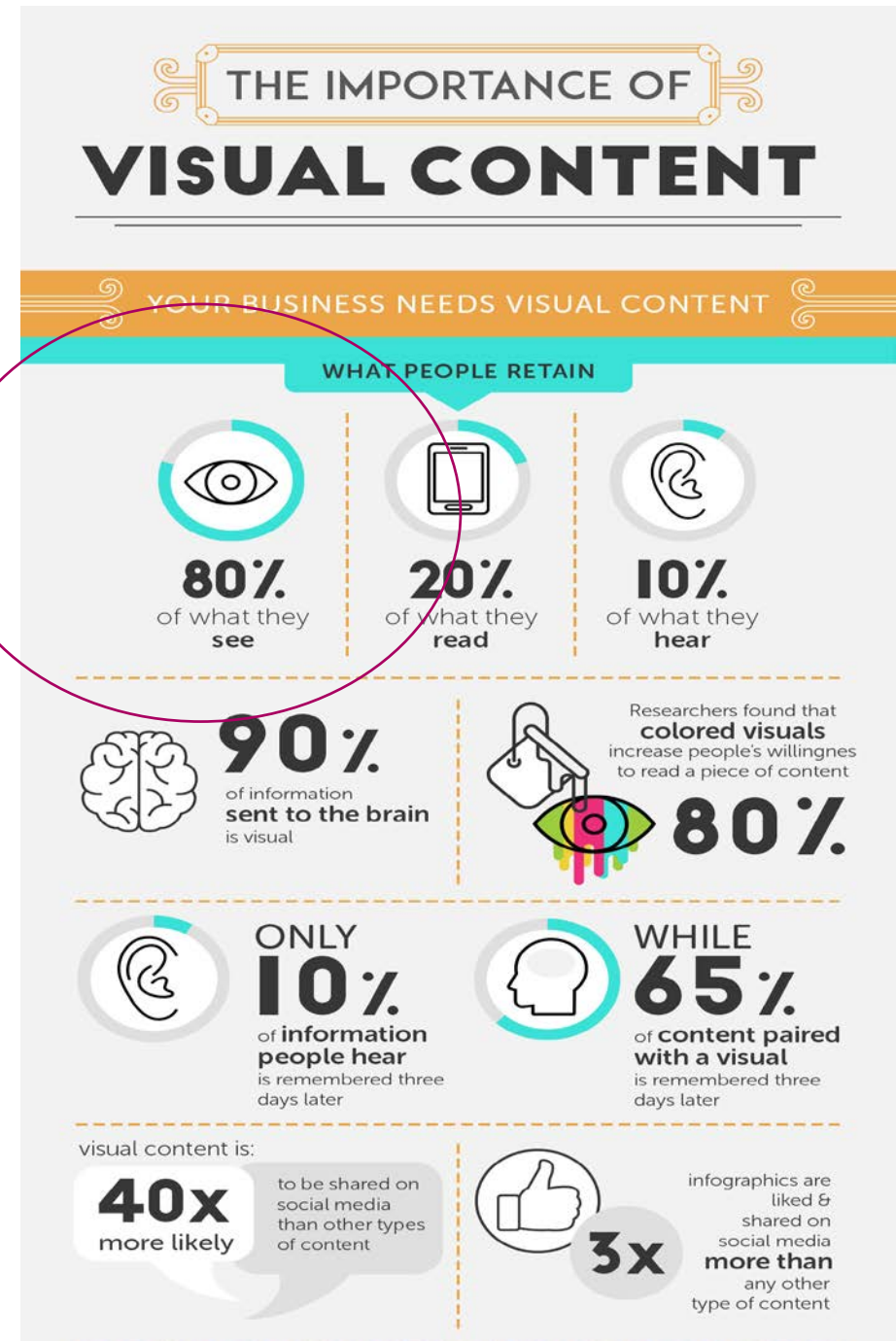


> **How:** Products (data, dashboards, infographics, policy briefs)



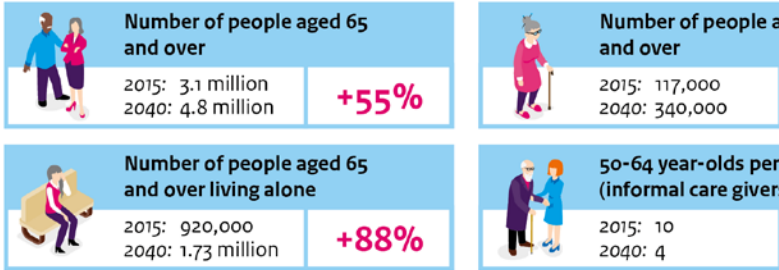
Knowledge Translation products (How?)

- > Simple to more complex (graphics – infographics – policy briefs)
- > Graphics and infographics
- > (Mis)communication

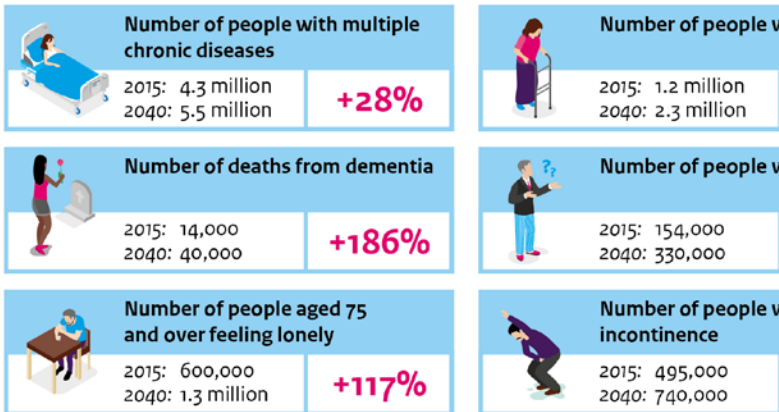


Impact of the ageing of the population

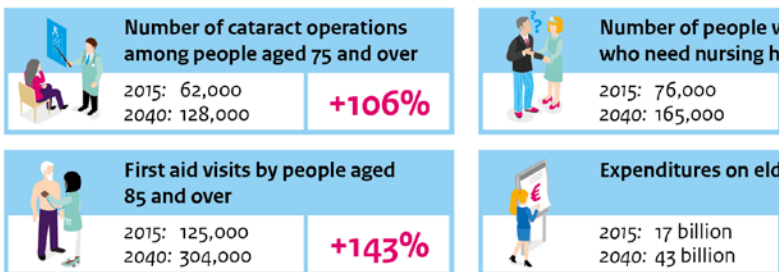
Socio-demographic changes in the population



Consequences for population health



Consequences for healthcare



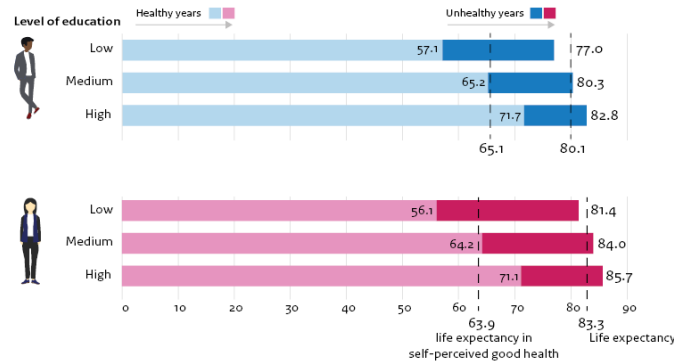
This infographic shows how population health and healthcare in the Netherlands will develop if historical trends continue without change and no new policies are implemented.

The National Institute for Public Health and the Environment

Large differences in (healthy) life expectancy

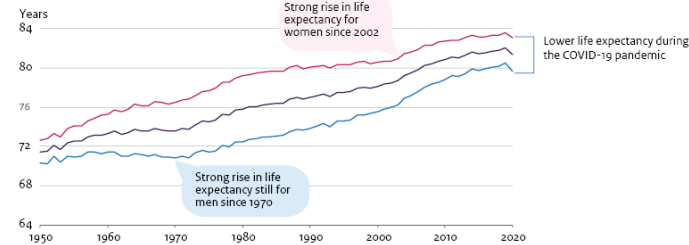
Higher educated live longer and longer in better health

Life expectancy at birth, 2017-2020

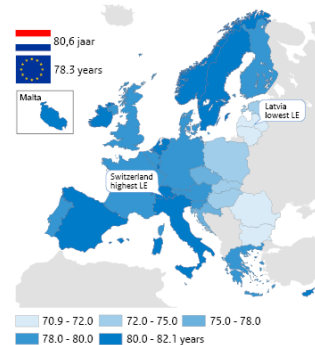


Life expectancy is rising

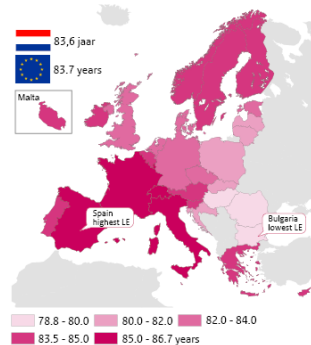
Life expectancy at birth, 1950-2020



Life expectancy for Dutch men higher than EU average 2019



Life expectancy for Dutch women at EU average 2019



Life expectancy (LE) used in this infographic is the "life expectancy at birth". This is the expected number of years a new born would live given current sex- and age-specific mortality rates.

Sources: Statistics Netherlands-Statline, 2019, 2020 en 2021; Eurostat, 2021

More informatie
This infographic is made by Volksgezondheidszorg.info, RIVM-National Institute for Public Health and the Environment, in the Netherlands. October 2021

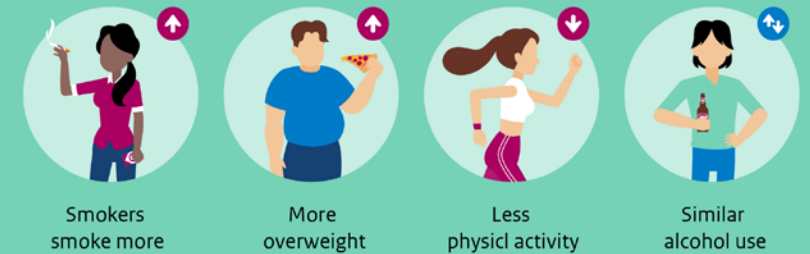
Indirect effects on health of coronavirus crisis

Impact on health care

- Lower levels of health care services
- Higher disease burden of cataract and arthrosis
- Cancer screening temporarily on hold



Changes in life style

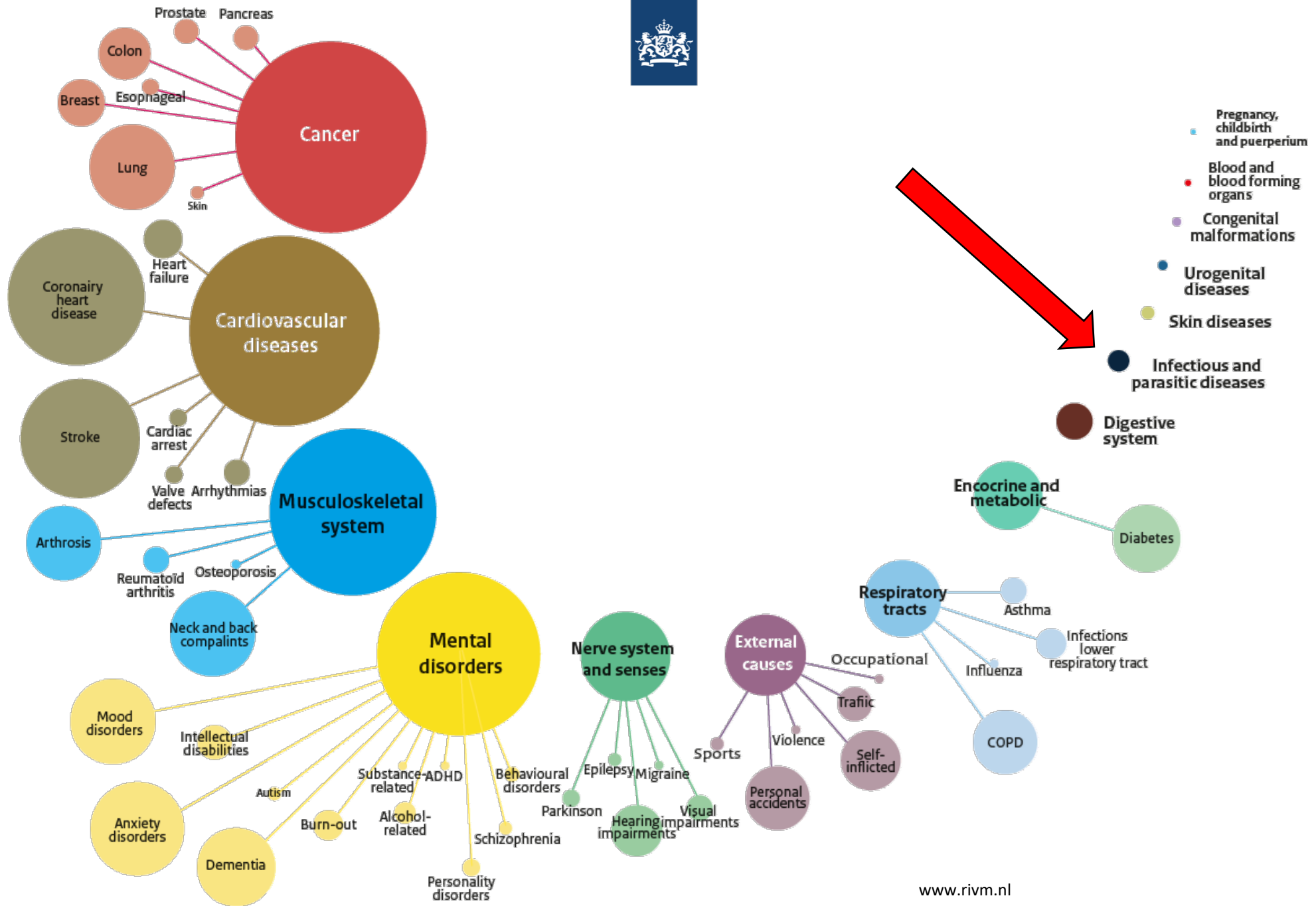


Impact of corona crisis on mental health

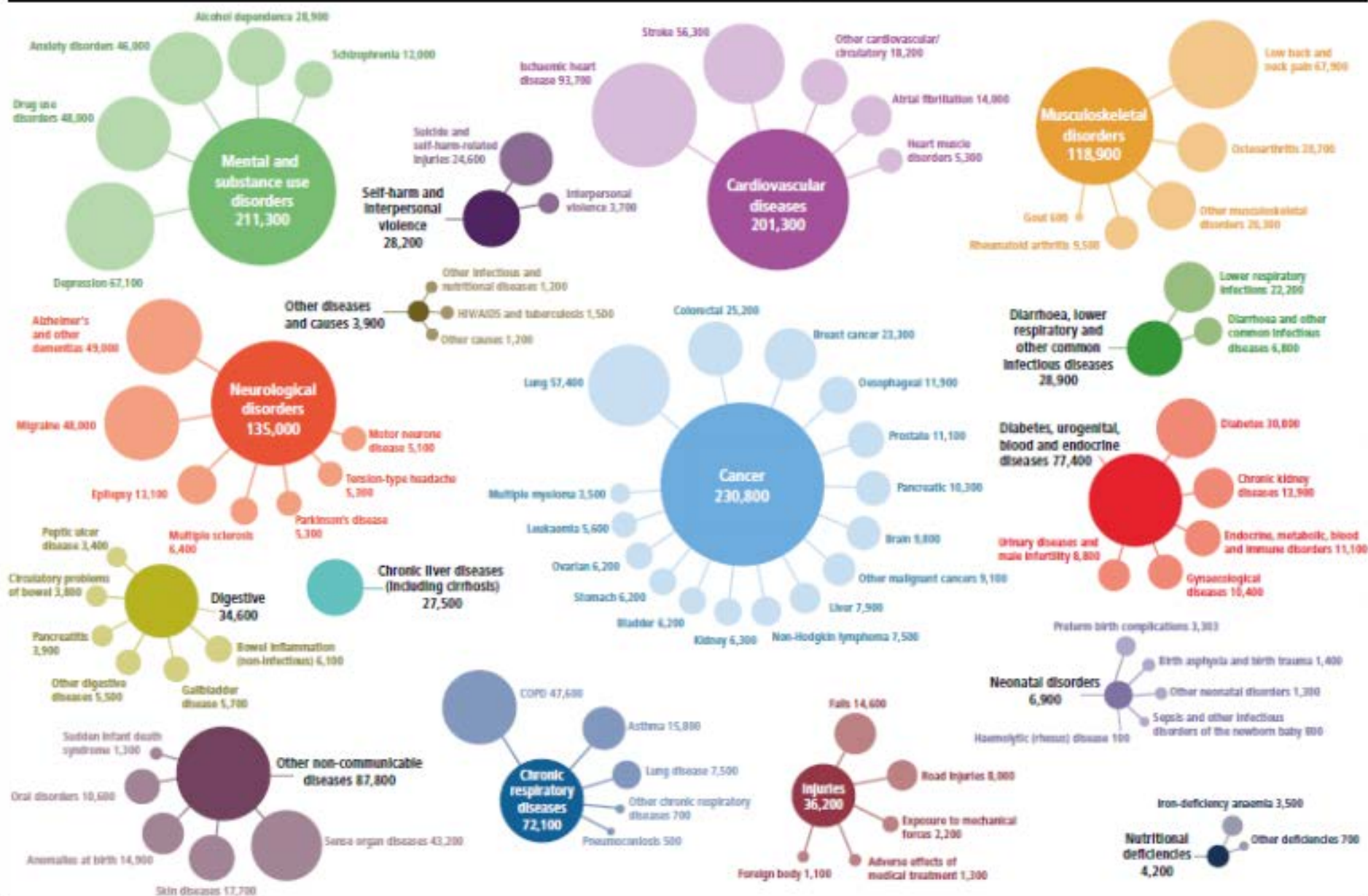




Examples of Burden of Disease (info)graphics



Burden of disease in Scotland, 2016



Note: The small bubbles show only the top 5 illnesses/diseases unless 80-90% of the total DALY, or a high-profile illness, was not captured. • DALY rounded to the nearest 100.

IHME platform interactive use



Single | Explore | Compare ▾

Settings [Use advanced settings](#)

Display **Cause** Risk

Measure Deaths YLDs **DALYs**

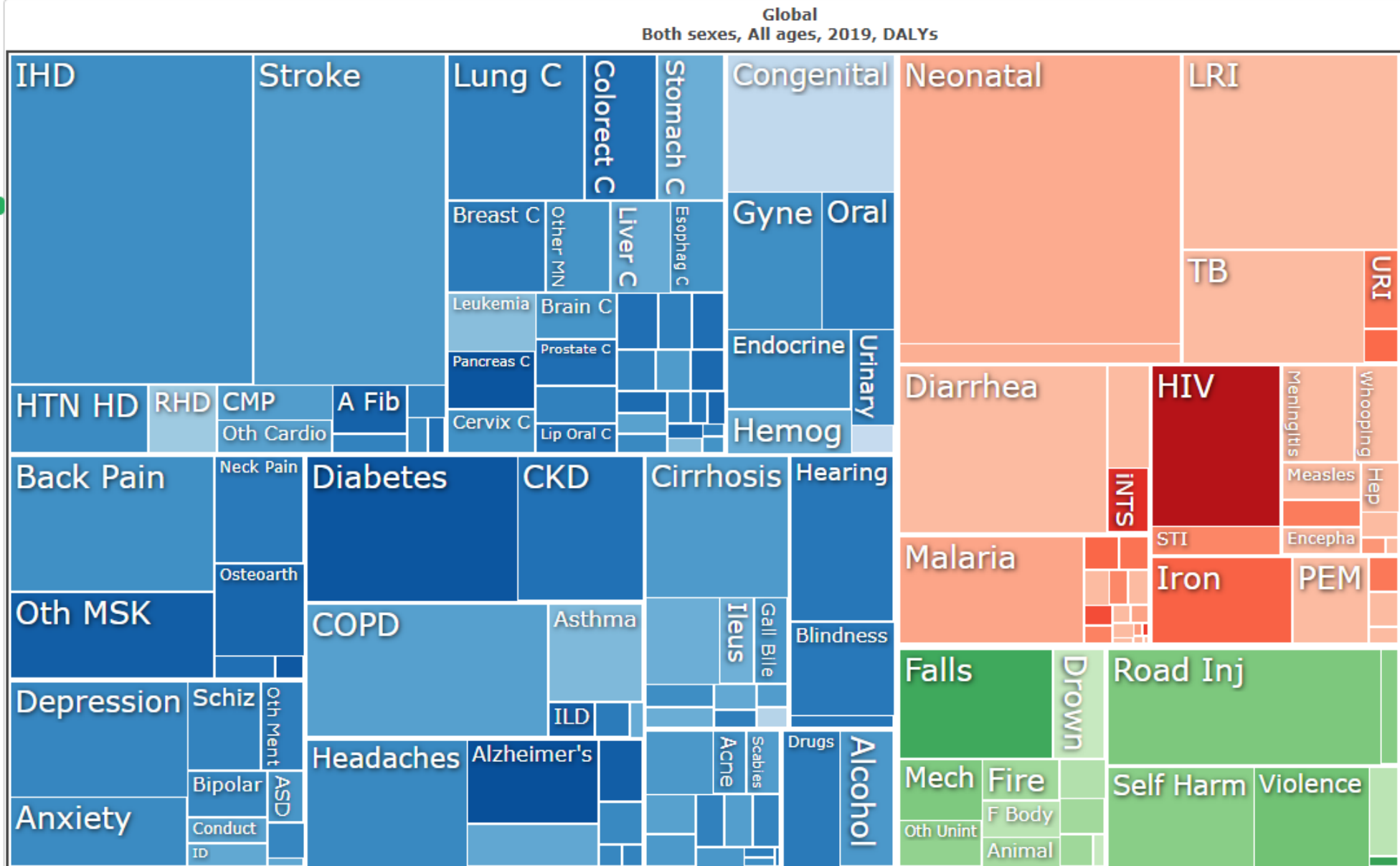

Location Global ▾

Year **2019**

Age **All** <5 5-14
15-49 50-69 70+

Sex Male Female **Both**

[Take tour ▶](#)



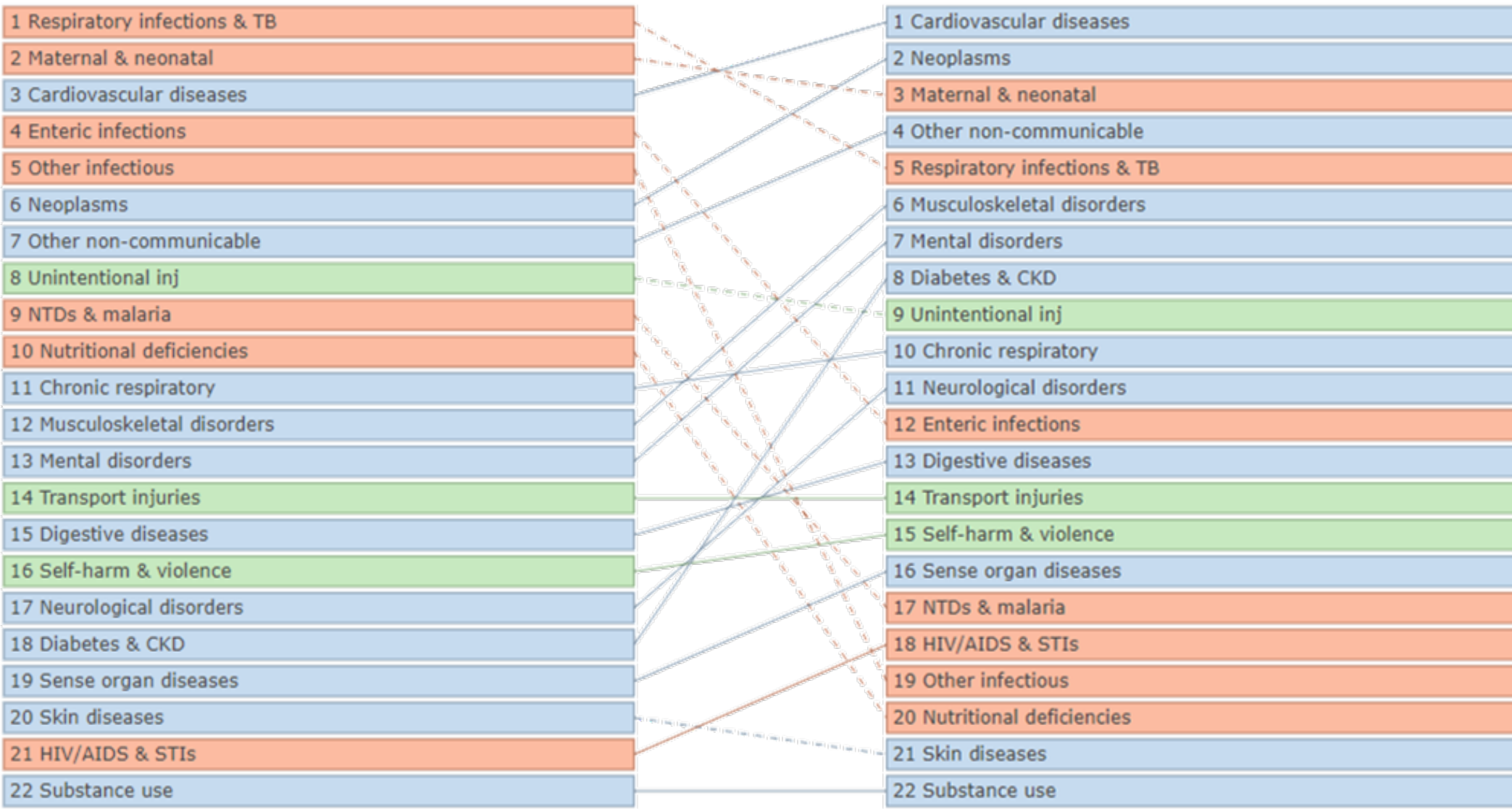


Ranking disease burden: changes over time

1990 rank

2019 rank

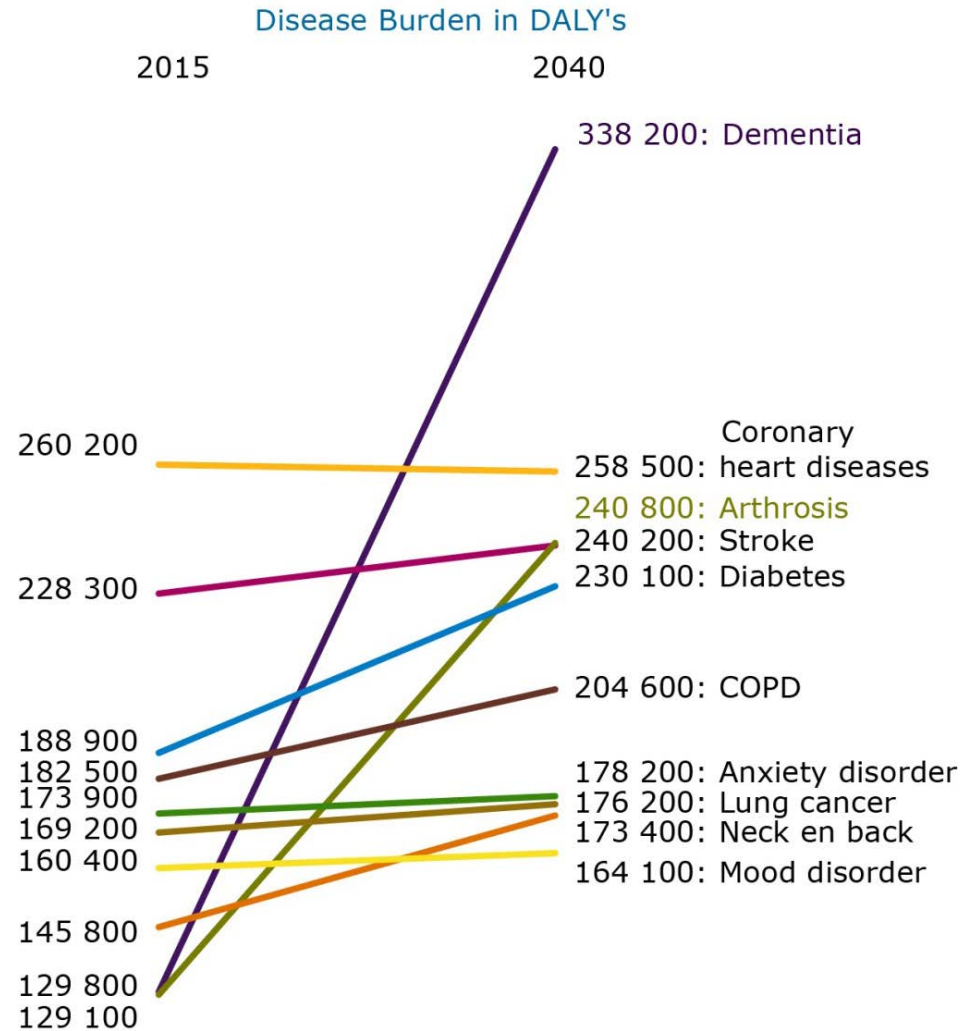
Communicable, maternal, neonatal, and nutritional diseases
Non-communicable diseases
Injuries



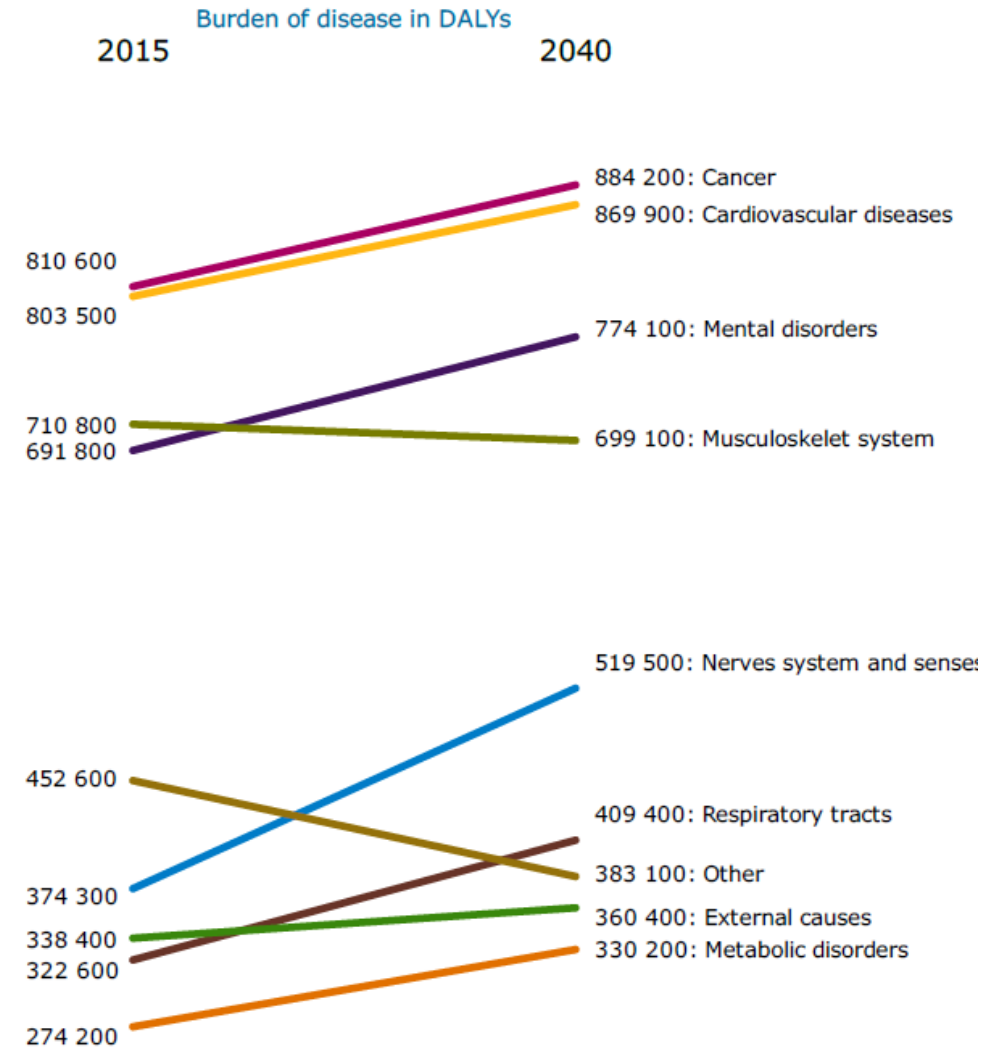


Disease burden over time: which level of results?

Individual diseases



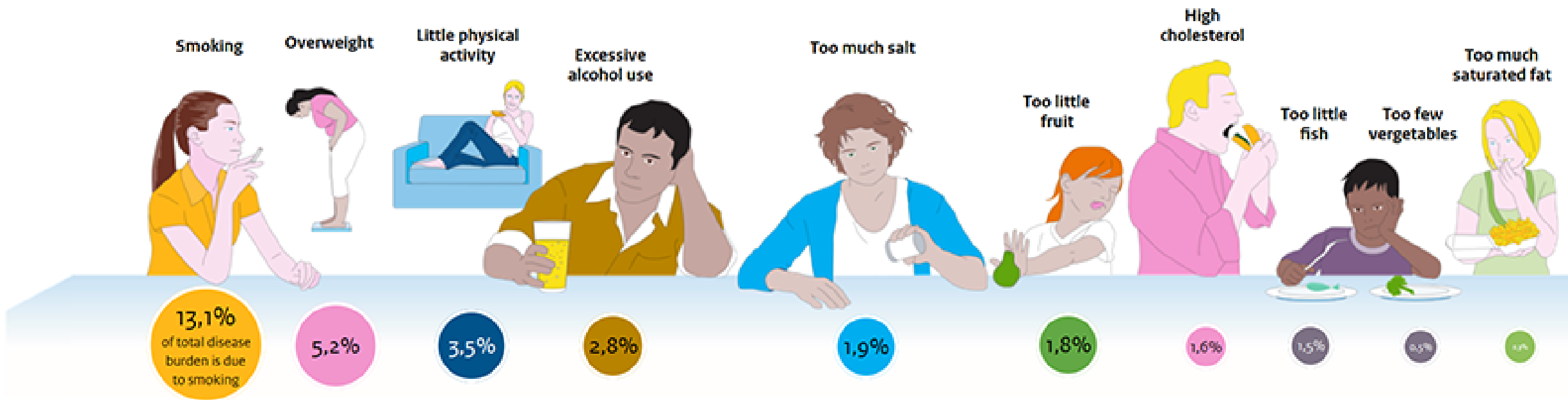
ICD-10 Chapters









Link to risk factors: focus on smoking message




















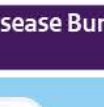








Contributions of various determinants to the total Dutch disease burden
(Percentages not to be added together)





Link to risk factors: better balanced, less attractive

| Behaviour | Metabolic | Occupational | Environment |
|--|--|---|---|
|  BoD: 18.5 % Deaths: 35,700 Expenses: € 8.6 billion |  BoD: 14.5 % Deaths: 26,300 Expenses: € 9.9 billion |  BoD: 4.6 % Deaths: 4,100 Expenses: € 1.6 billion |  BoD: 4.0 % Deaths: 12,800 Expenses: € 1.2 billion |

| | Disease Burden (%) | | Disease Burden (%) | | Disease Burden (%) | | Disease Burden (%) |
|---|--|---|--|---|---|---|--|
|  Smoking |  9.4% |  High blood pressure |  6.7% |  Work environment |  3.0% |  Outdoor environment |  3.5% |
|  Unhealthy diet |  8.1% |  High fasting glucose |  6.6% |  Psychosocial workload |  0.9% |  Indoor environment |  0.5% |
|  Insufficient physical activity |  2.3% |  Overweight |  3.7% |  Physical workload |  0.7% | | |
|  Alcohol use |  1.5% |  Cholesterol |  0.9% | | | | |
| | |  Low mineral bone density |  0.7% | | | | |



(some) Findings

- › Complexity of Burden of Disease concept remains and obstacle
 - Easy-to-digest and attractive results
 - And more detailed results for those interested
- › Less is more
 - but less is also less
- › Think carefully about the message that you want to communicate
 - And test it
- › Be creative!!



National Institute for Public Health
and the Environment
Ministry of Health, Welfare and Sport

Thank you

Henk.Hilderink@rivm.nl

See also:

WP Knowledge translation of
www.burden-eu.net

Session 7.H. - Knowledge
Translation and Burden of
Disease, from theory to
practice, 17:30-18:30



COST Action CA18218
European Burden of Disease Network



www.burden-eu.net

